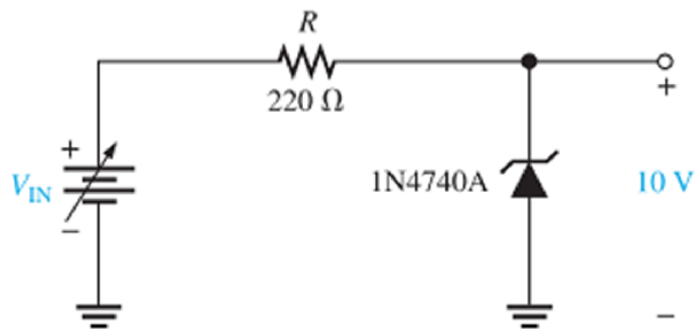


Electronic Engineering

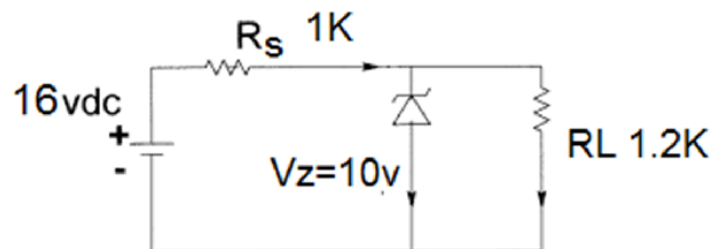
Shee3: Zener Diodes

1- What are the ratings of V_{IN} in figure (1) if

$$I_{ZK} = 0.25mA, P_{D(max)} = 1W, V_Z = 10V ?$$



2- For fixed regulation in figure (2) , calculate V_L , I_L , I_{ZK} , I_{ZM}



3- Repeat problem (2) if R_L replaced with $3K$